

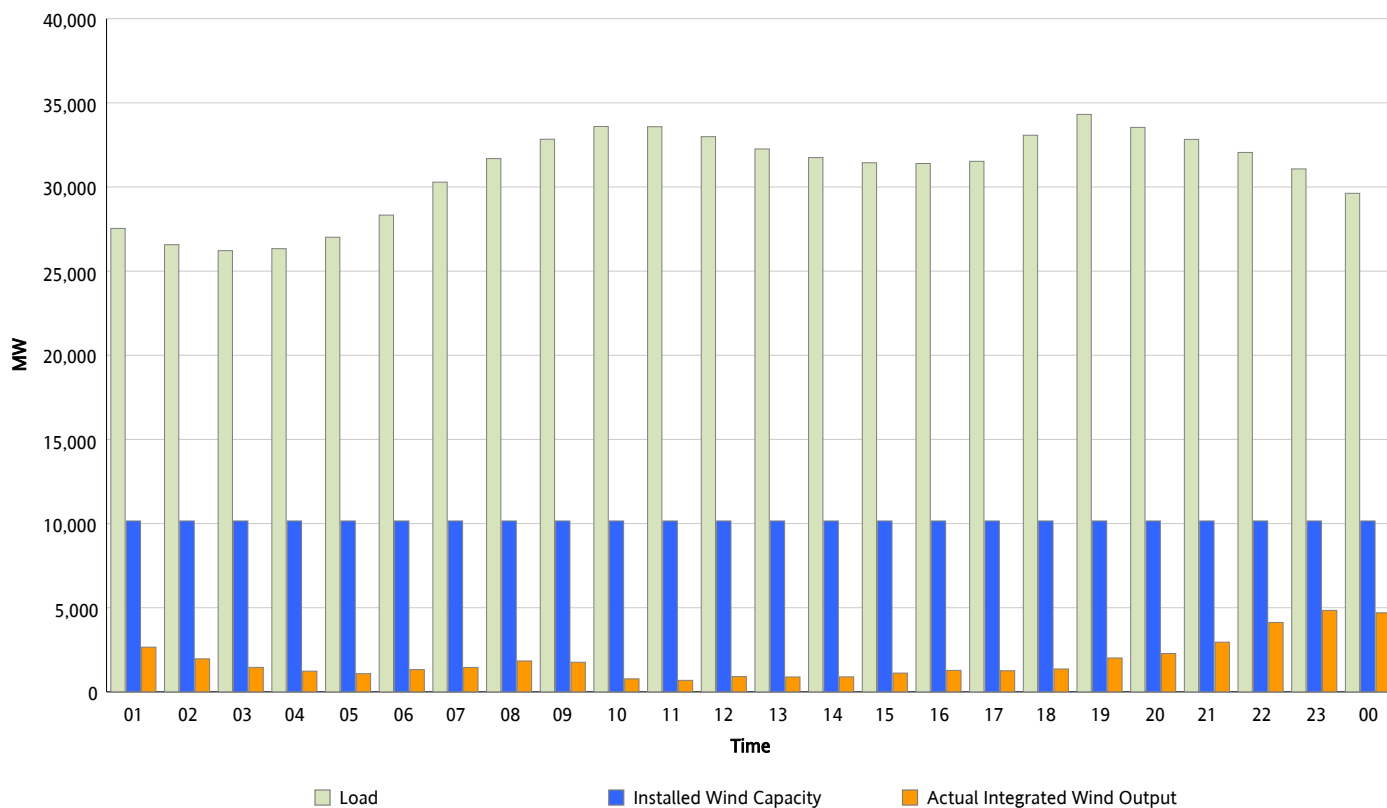


ERCOT Grid Operations

Wind Integration Report : 12/24/2012

Peak Load	34,312 MW
Load Peak Hour (HE)	19
Wind Over Peak	2,013 MW
Wind Record 11/10/12	8,521 MW
Max Wind Value*	4,992 MW
Wind Peak Time	22:41
Wind Integration %	16.17 %

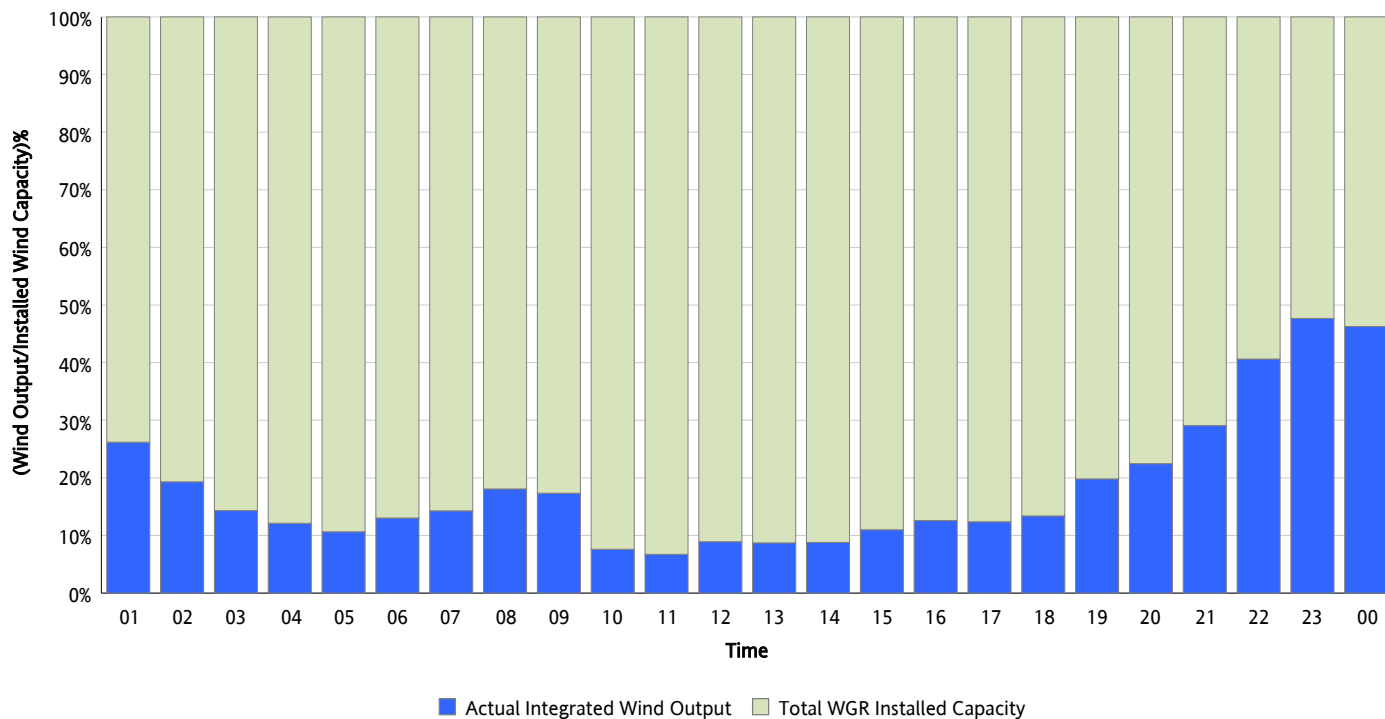
Hourly Average Actual Load vs. Actual Wind Output
12/24/2012



* Wind Record and Wind Max represent instantaneous values and the rest of the values are integrated over the hour

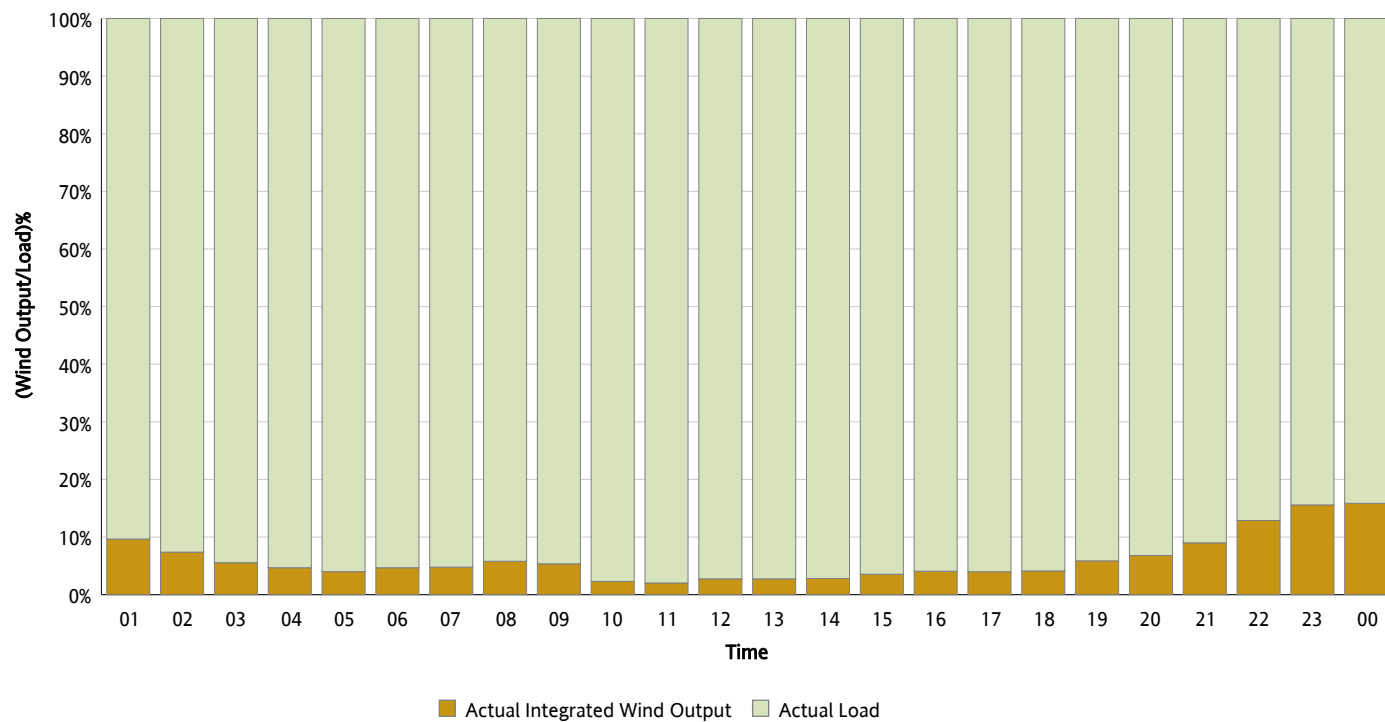
Actual Wind Output as a Percentage of the Total Installed Wind Capacity

12/24/2012



Actual Wind Output as a Percentage of the ERCOT Load

12/24/2012



ERCOT Load vs. Actual Wind Output

12/17/2012 - 12/24/2012

